



3D TOY SKIPPER



GETTING STARTED

- Cut solid lines and fold dotted lines.
- Fold all pieces upward or downward along score lines.

1



CUT

2



SCORE

MOUNTAIN FOLD



VALLEY FOLD

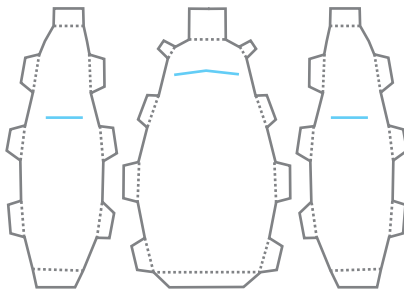


INSTRUCTIONS PAGE 1

FRONT, RIGHT SIDE, LEFT SIDE

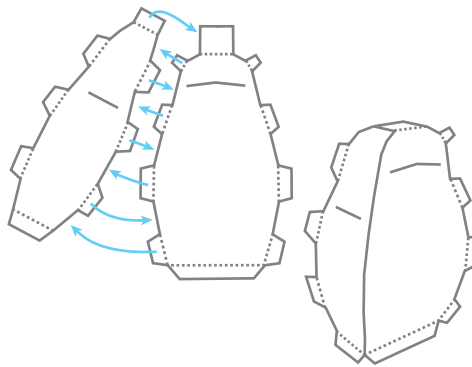
1

Cut out along outer solid gray lines. Also cut inner solid gray lines for BEAK, RIGHT FLIPPER and LEFT FLIPPER.



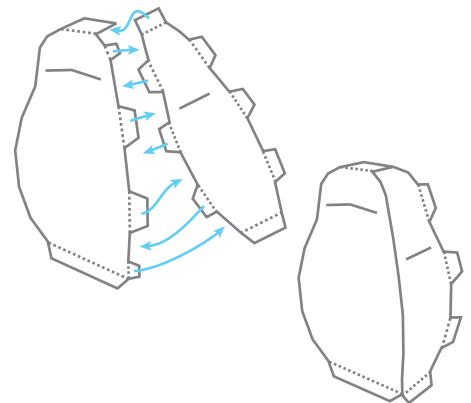
2

Glue FRONT to RIGHT SIDE with tabs 1 - 8.



3

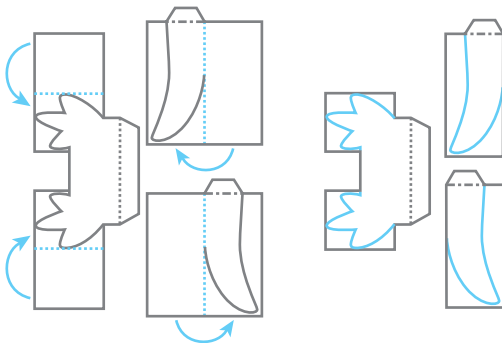
Glue LEFT SIDE to FRONT with tabs 10 - 16.



BEAK, LEFT ARM, RIGHT ARM, FEET

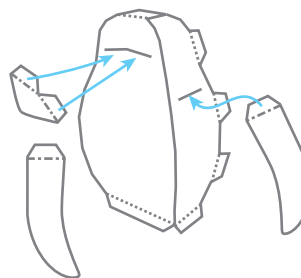
4

Cut out only outer solid gray lines. Mountain fold and glue FEET, LEFT FLIPPER, RIGHT FLIPPER along these lines. Once dry, cut along inner solid line.



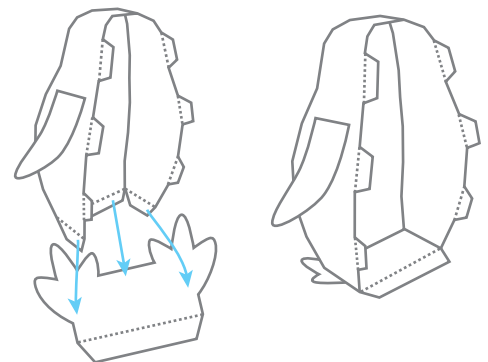
5

Insert BEAK into FRONT. Glue tabs 17 and 18 to the inside. Insert LEFT FLIPPER into LEFT SIDE and glue tab 19 to the inside. Repeat for the RIGHT FLIPPER and tab 20.



6

Attach FEET to FRONT with tab 21, then to RIGHT SIDE and LEFT SIDE with tabs 22 and 23.

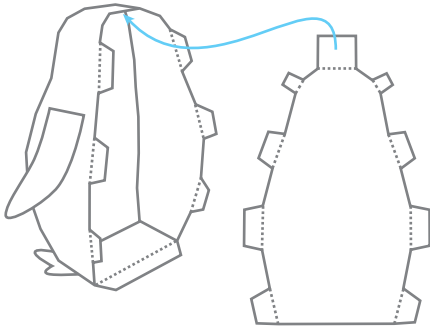


Continue instructions on page 2

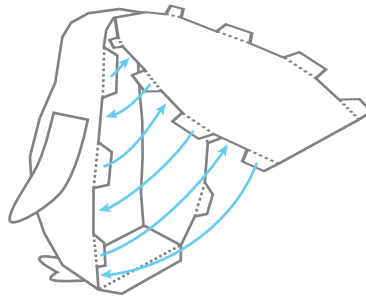
INSTRUCTIONS PAGE 2

BACK

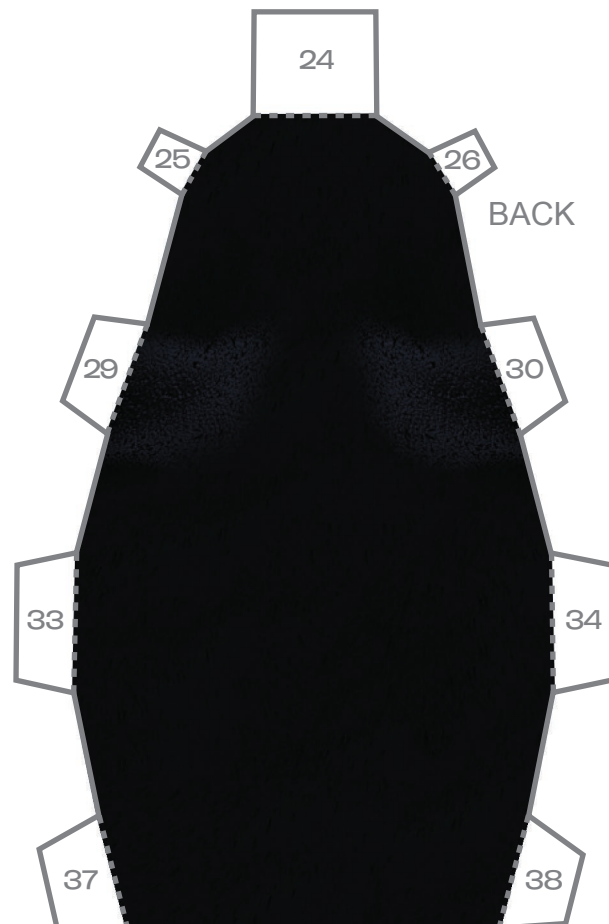
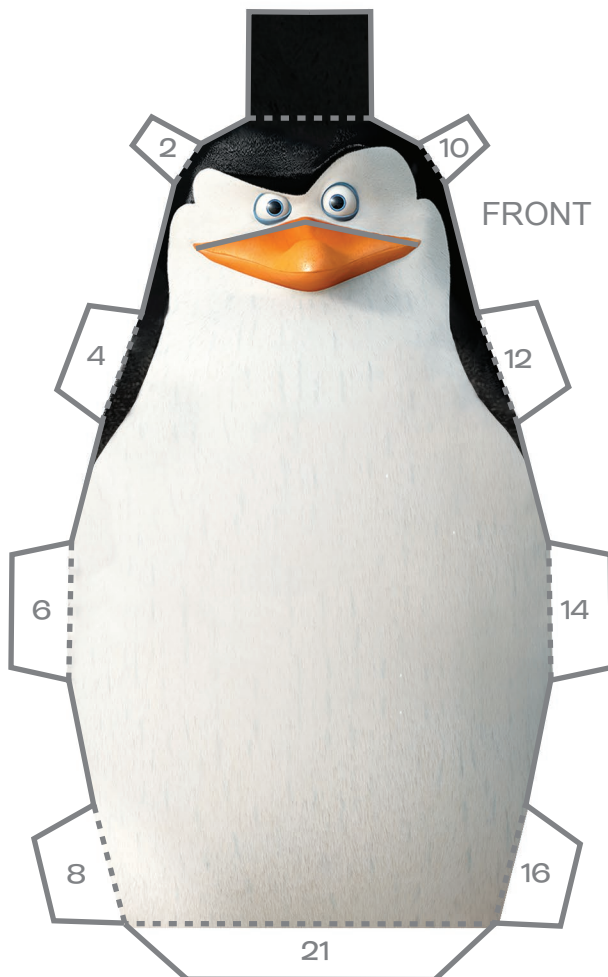
- 7** Cut out along outer solid gray lines. Connect BACK to the top of Skipper's head with tab 24.

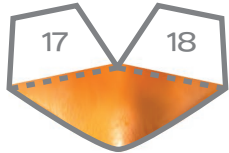


- 8** Continue to connect back to LEFT SIDE AND RIGHT SIDE with tabs 25 - 38 and finish by gluing FEET tab 39 to the bottom of Skipper's BACK.

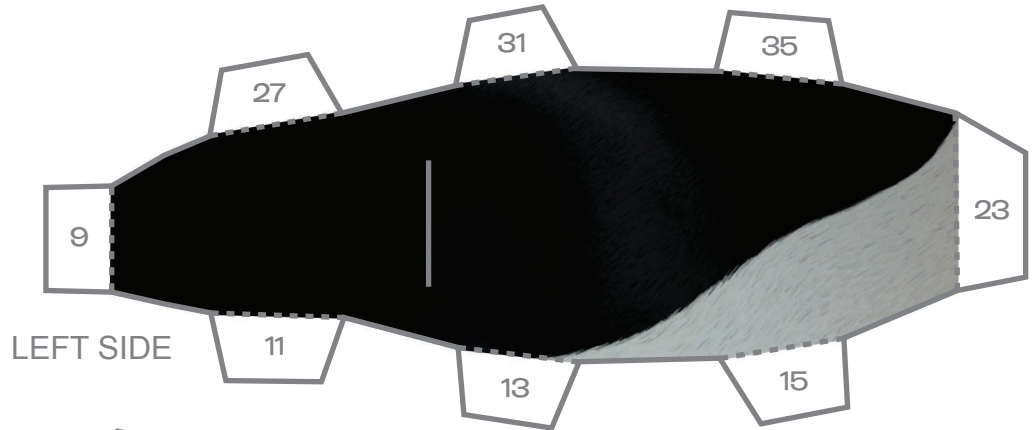


Congratulations! Skipper is complete!

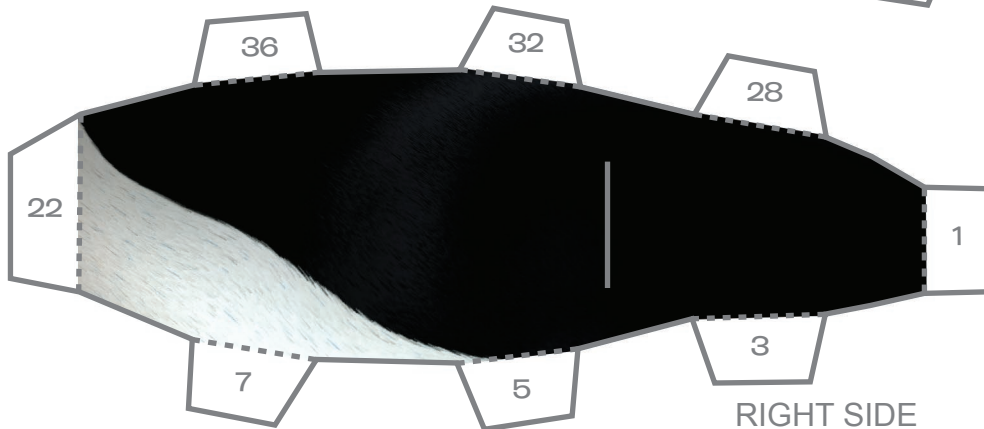




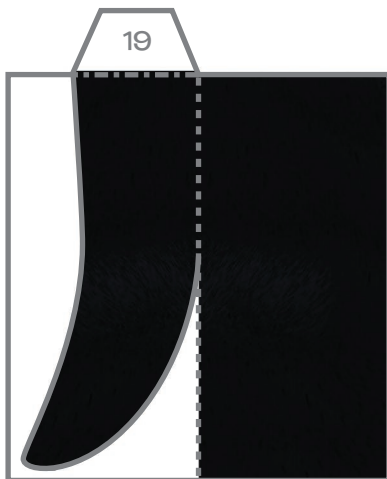
BEAK



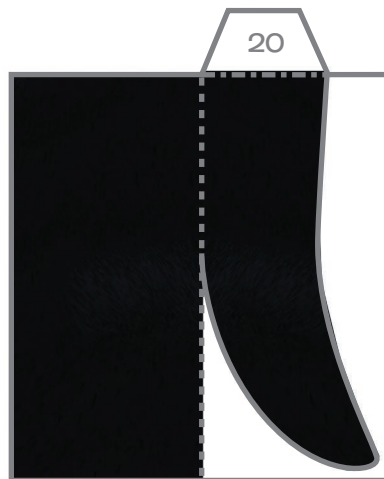
LEFT SIDE



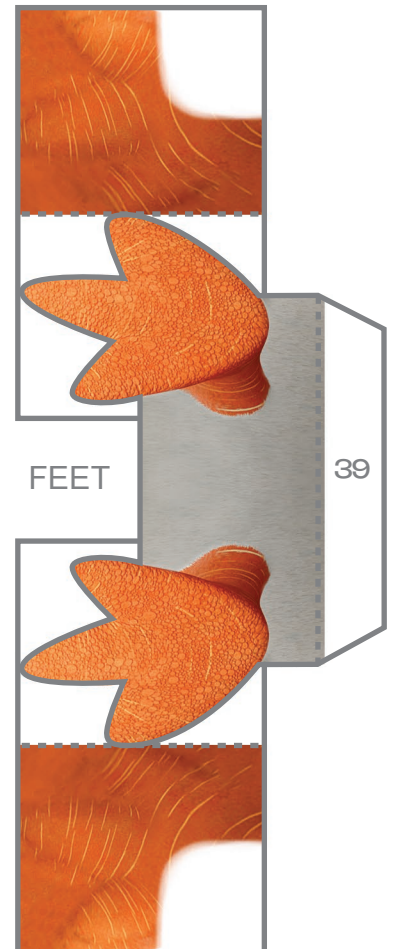
RIGHT SIDE



LEFT FLIPPER



RIGHT FLIPPER



FEET